

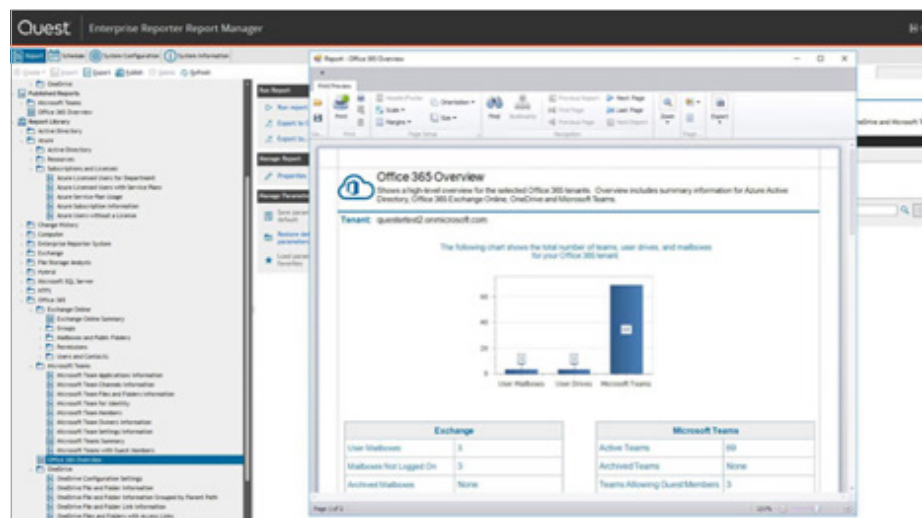
# Microsoft Teams & OneDrive reporting with Enterprise Reporter

Discover and report on Teams and OneDrive data

Microsoft Teams usage is exploding. In fact, in just the first four months of 2020, Teams daily active users have doubled — from 22 million to 44 million. This bolsters Microsoft’s claim that Teams is their fastest growing application in history. It also, however, means many organizations need to learn to support a vast remote workforce. Is your Teams environment set up so anyone can create Teams as needed? And if they can, how is IT ensuring governance over all these users and content?

Along with that, more users in Teams inevitably means more content in SharePoint Online and OneDrive for Business. Without increased visibility, it can be difficult to really know what’s happening in your environment and how it’s growing.

With Enterprise Reporter, you can ensure the security of your Teams and OneDrive workloads by delivering visibility into users, groups, permissions, configurations, vulnerabilities, licensing and more. Detailed, customizable reports provide insight so you can protect sensitive data and more easily prepare for internal and external audits. Enterprise Reporter helps you get additional visibility into your Teams environment with information on how many, how large, how they are configured and more, so you can continue optimizing your environment and save on licensing costs. And automated reports help reduce IT workloads while ensuring stakeholders have the information they need, when they need it.



Get a complete overview of your Teams and OneDrive environment.

"[Enterprise Reporter offered a] clear, concise view of our existing environment that allowed us to better provision and manage the new environment."

*Chief Technology Office (CTO)  
Global 500, energy & utilities  
company, Source: TechValidate*

## BENEFITS:

- Improve security and compliance with visibility into the configuration of critical IT assets in Teams and OneDrive.
- Stay on top of who can access channels and groups in Microsoft Teams as well as shared files and folders across OneDrive for Business.
- Avoid group sprawl in your Office 365 environment with visibility into what Microsoft Teams are being created and how they're being used.
- Scale to Azure AD and Office 365 environments of any size and in any location

## SYSTEM REQUIREMENTS

See the [Release Notes](#) for the full list of system requirements.

## EXAMPLES OF BUILT-IN REPORTS

- Microsoft Teams Summary
- Microsoft Teams with Guest Members
- Microsoft Teams Setting Information
- Microsoft Teams Owners Information
- Microsoft Teams Members
- Microsoft Team Files and Folders Information
- Microsoft Team Channels Information

## FEATURES

### Security and compliance visibility

Gain visibility into the configuration of critical IT assets in Azure AD, Exchange Online, Microsoft Teams and OneDrive for Business, as well as Azure, with flexible security reporting. Comprehensive reporting provides the insight necessary to ensure cloud security, as well as compliance with internal policies and external regulations.

### Insight into permissions

Stay on top of who can access which resources across your Microsoft Azure, Azure AD, Microsoft Teams and Office 365 environment, including Exchange Online and OneDrive for Business. Get permissions reporting on:

- Azure AD users, groups, roles, applications and devices
- Shared files and folders across OneDrive for Business
- Mailboxes and public folders in Exchange Online
- Azure resources, including VMs, disks, network security groups, storage accounts and more

### Microsoft Teams assessment

Quickly discover and report on what Microsoft Teams exist in your Office 365 environment, who the Team members are, and how the Team is being used. Enterprise Reporter for Office 365 makes it easy to stay on top of

Microsoft Teams growth to avoid group sprawl and monitor usage.

### Visibility into tenants, subscriptions and licensing

Easily optimize Office 365 license allocation and service plan decisions with visibility into your tenants, subscriptions and licensing service plans, as well as resources hosted in Azure, such as virtual machines, storage accounts and disks.

### Pre-migration assessment

Ensure a smooth domain migration or consolidation project by pinpointing Azure AD user and group dependencies, matching objects, potential conflicts, and disabled accounts before the migration starts.

## ABOUT QUEST

Quest helps our customers reduce tedious administration tasks so they can focus on the innovation necessary for their businesses to grow. Quest® solutions are scalable, affordable and simple-to-use, and they deliver unmatched efficiency and productivity. Combined with Quest's invitation to the global community to be a part of its innovation, as well as our firm commitment to ensuring customer satisfaction, Quest will continue to accelerate the delivery of the most comprehensive solutions for Azure cloud management, SaaS, security, workforce mobility and data-driven insight.

### Quest

4 Polaris Way, Aliso Viejo, CA 92656 | [www.quest.com](http://www.quest.com)  
If you are located outside North America, you can find local office information on our Web site.

Quest, Active Administrator and the Quest logo are trademarks and registered trademarks of Quest Software Inc. For a complete list of Quest marks, visit [www.quest.com/legal/trademark-information.aspx](http://www.quest.com/legal/trademark-information.aspx). All other trademarks and registered trademarks are property of their respective owners.

© 2017 Quest Software Inc. ALL RIGHTS RESERVED.

DataSheet-ER\_OneDrive-US-JY-59068

